



## Black Tie Group LLC

Yuba City, CA 95991  
support@blacktiecbd.net  
888-702-2285

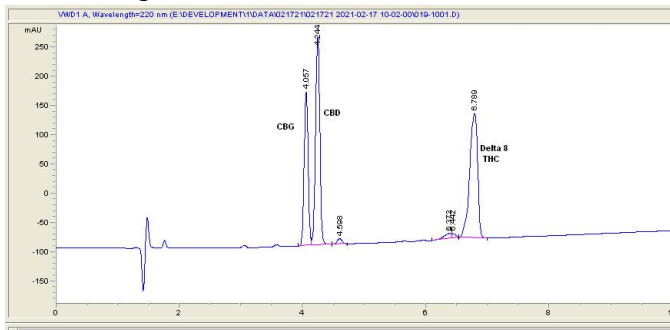
## Sample 214-021621-019

CBD/CBG/Delta 8 Vape cartridge  
Sample Submitted: 02-16-2021; Report Date: 02-16-2021

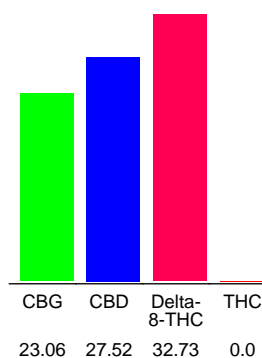
## CBD/CBG/Delta 8 Vape cartridge

Distillate

### Chromatogram



### Cannabinoid Profile



### Cannabinoid Profile by HPLC

**0.00%**  
Calculated THC Yield

**27.52%**  
Calculated CBD Yield

**83.31%**  
Total Cannabinoids

| Cannabinoid                                       | % wt         | mg/g          |
|---|--------------|---------------|
| CBG   | 23.06        | 230.6         |
| CBD   | 27.52        | 275.2         |
| Delta-8-THC                                       | 32.73        | 327.3         |
| THC   | 0.0          | 0.0           |
| <b>Total Cannabinoids</b>                         | <b>83.31</b> | <b>833.1</b>  |
| <b>Calculated THC Yield</b>                       | <b>0.00</b>  | <b>0.00</b>   |
| <b>Calculated CBD Yield</b>                       | <b>27.52</b> | <b>275.20</b> |
| Calculated Maximum THC Yield = THC + 0.877 * THCA |              |               |
| Calculated Maximum CBD Yield = CBD + 0.877 * CBDA |              |               |

**Marin Analytics, LLC**  
250 Bel Marin Keys Blvd, Suite D4  
Novato, CA 94949

415-936-6477 / Support@MarinAnalytics.com

**Sara Biancalana**  
Chief Scientist

This sample has been tested by Marin Analytics, LLC using valid testing methodologies and a quality system. Values reported relate only to the sample tested. Marin Analytics, LLC makes no claims as to the efficacy, safety or other risks associated with any detected or non-detected levels of any compounds reported herein. This Certificate shall not be reproduced except in full, without the written approval of Marin Analytics, LLC.