



Black Tie

Sample 214-080522-262

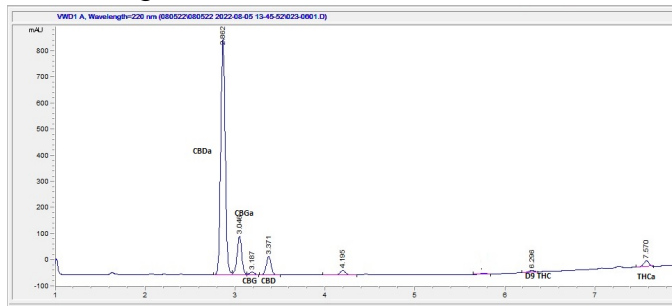
Bubba Kush

Sample Submitted: 08-05-2022; Report Date: 08-05-2022

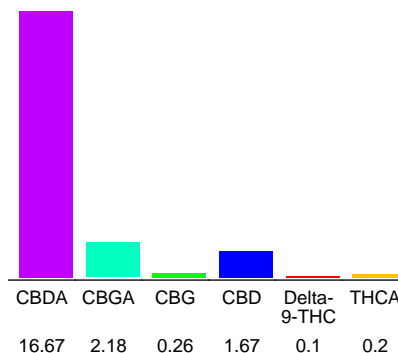
## Bubba Kush

Plant Material: Flower

### Chromatogram



### Cannabinoid Profile



### Cannabinoid Profile by HPLC

**0.28%**

Calculated Delta-9-THC Yield

**16.29%**

Calculated CBD Yield

**21.08%**

Total Cannabinoids

Cannabinoid	% wt	mg/g
CBDA	16.67	166.7
CBGA	2.18	21.8
CBG	0.26	2.6
CBD	1.67	16.7
Delta-9-THC	0.1	1.0
THCA	0.2	2.0
<b>Total Cannabinoids</b>	<b>21.08</b>	<b>210.8</b>
<b>Calculated Delta-9-THC Yield</b>	<b>0.28</b>	<b>2.75</b>
<b>Calculated CBD Yield</b>	<b>16.29</b>	<b>162.90</b>

Calculated Maximum Delta-9-THC Yield = Delta-9-THC + 0.877 \* THCA  
 Calculated Maximum CBD Yield = CBD + 0.877 \* CBDA

#### Marin Analytics, LLC

250 Bel Marin Keys Blvd, Suite D4  
 Novato, CA 94949

415-936-6477 / sarabiancalana1@gmail.com

**Sara Biancalana**  
 Chief Scientist

This sample has been tested by Marin Analytics, LLC using valid testing methodologies and a quality system. Values reported relate only to the sample tested. Marin Analytics, LLC makes no claims as to the efficacy, safety or other risks associated with any detected or non-detected levels of any compounds reported herein. This Certificate shall not be reproduced except in full, without the written approval of Marin Analytics, LLC.